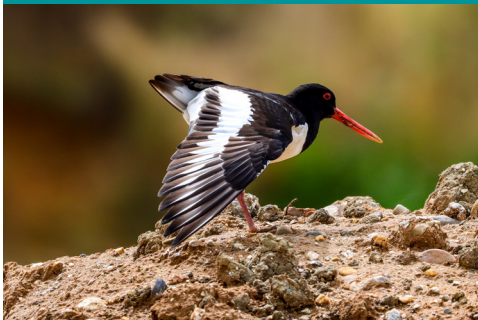


Catching the moment...

The MPA Nature Photo Competition 2026
for all volunteers at restored mineral sites



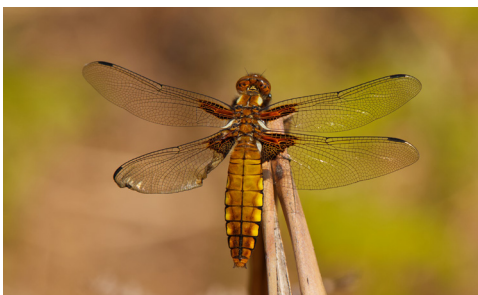
To celebrate the creation of amazing spaces for nature, the Mineral Products Association is holding the sixth Nature Photo competition for all volunteers based at nature reserves which are former quarries.

Entries can be images of species (both fauna and flora) and habitats (including their landscape setting) found on operational quarries, partly or fully restored sites or any site plant.

The competition is open until **18 September 2026** and any photographs entered must have been taken between 1 January 2024 and 18 September 2026 to allow all the seasons and different wildlife to be captured.

Winners will be announced in Autumn 2026.

Prizes of vouchers for photographic equipment will be awarded to first, second and third placed winners.



You can enter a maximum of 5 images (between 1MB and 5MB each in size) which should be sent as separate emails direct to MPA at rhian.geary@mineralproducts.org – please read terms and conditions below.

For further information please contact Rhian Geary at MPA rhian.geary@mineralproducts.org or 0203 978 3421

Terms & Conditions

Email your photos one at a time in JPEG format to rhian.geary@mineralproducts.org up to 5MB (1MB minimum), telling us where the photo/s was taken and when. You should also include a brief description to put the photo/s into context. Please keep large resolution copies of your photos, in case your entry is successful, for promotional and printing purposes.

Please tell us your full name, age, company, job role, location and a contact phone number with your submissions.

You must hold the copyright for or have the right to use the image(s). Please abide by your company's health & safety regulations and gain permission to photograph if required.

By submitting an entry you give MPA permission to use your image(s) in future publicity. The entrant will receive acknowledgement where their entry is used.

Entries from professional photographers (those whose main income is their photography) are not eligible to enter. No photoshopped composites, faked or doctored images are permitted.

The judges' decision is final.

*Oystercatcher | Gallows Hill Quarry | Ian Rumbellow
Reedbeds in early morning light | Cleveland Lakes | by Jill Bewley
Dark green fritillary butterflies | Arcow Quarry | by Michael Cardus
Kingfisher | Hereford Quarry | by Adrian Radnor
Broad bodied chaser dragonfly | Cossington Meadows | by Mike Belson*