

# **MINERAL PRODUCTS ASSOCIATION**

## **ANNUAL MINERAL PLANNING SURVEY (AMPS)**

**2010**

# CONTENTS

		<b>Page</b>
	<b>INTRODUCTION</b>	1
<b>SECTION ONE</b>	<b>SCALE OF SURVEY</b>	2
<b>SECTION TWO</b>	<b>TRENDS IN DECISIONS</b>	
	Tables 1-3 Sand & Gravel Applications Submitted, Decisions & Appeals 2010	2-3
	Tables 4-6 Crushed Rock Applications Submitted, Decisions & Appeals 2010	3-4
	Table 7 Status of All Applications 2010	5
	Table 8 Numbers of ROMP & Section 73 Applications 2010	5
	Table 9 All Aggregates 10 Yr Running Averages 1996-2010	5
	Chart 1 Running Average of Application Status & Applications Submitted 1996-2010	6
<b>SECTION THREE</b>	<b>TONNAGES ASSOCIATED WITH DECISIONS</b>	
	Table 10 Tonnage Approved, Refused and Pending 2010	7-8
	Table 11 Tonnage 10 Yr Running Averages 1996-2010	8
	Table 12 Replenishment Rates GB 2001-2010	8
	Chart 2 Running Average Tonnages Approved, Refused & Pending 1996-2010	9
	Chart 3 Running Average Mineral Replenishment Rates 2001-2010	10
<b>SECTION FOUR</b>	<b>DECISION TIMES</b>	
	Table 13 Duration of Approval Process (No.s of applications) - Sand & Gravel 2010	11
	Table 14 Duration of Approval Process (No.s of applications) -- Crushed Rock 2010	11
	Table 15 Annual Average Duration of Approval Process - Sand & Gravel (Months) 2010	12
	Table 16 Annual Average Duration of Approval Process - Crushed Rock (Months) 2010	12
	Table 17 Running Average of Applications in 'Time to Process' Categories 1996-2010	12
	Table 18 Running Average Time from Submission to Approval (Months) 1996-2010	12
	Chart 4 Running Average of Applications in 'Time to Process' Categories 1996-2010	13
	Chart 5 Average Times from Submission to Approval for All Aggregates 1996-2010	14
<b>SECTION FIVE</b>	<b>LANDBANKS</b>	
	Table 19 Landbanks - England	15-16
	Table 20 Landbanks - Change (1997-2009)	17

SECTION SIX	<b>DEVELOPMENT PLANS</b>	Table 21	East of England - Core Strategies	18
		Table 22	East of England - Other DPDs	18
		Table 23	East Midlands - Core Strategies	19
		Table 24	East Midlands - Other DPDs	19
		Table 25	London - Core Strategies	20
		Table 26	London - Other DPDs	20
		Table 27	North East - Core Strategies	21
		Table 28	North East - Other DPDs	21
		Table 29	North West - Core Strategies	22
		Table 30	North West - Other DPDs	22
		Table 31	South East - Core Strategies	23
		Table 32	South East - Other DPDs	23-24
		Table 33	South West - Core Strategies	24
		Table 34	South West - Other DPDs	25
		Table 35	West Midlands - Core Strategies	25
		Table 36	West Midlands - Other DPDs	26
		Table 37	Yorks & Humber - Core Strategies	26
		Table 38	Yorks & Humber - Other DPDs	27
		Table 39	North Wales - Local Development Plans	27
		Table 40	South Wales - Local Development Plans	28
		Chart 6	Mineral Local Plan Progress (England)	29
Table 41	Mineral Local Plan Progress (England)	30		
SECTION SEVEN	<b>SUMMARY/KEY POINTS</b>			30

## INTRODUCTION

The Mineral Products Association (MPA) is the trade association for the aggregates, asphalt, cement, concrete, dimension stone, lime, mortar and silica sand industries. With the recent addition of The British Precast Concrete Federation (BPCF) and the British Association of Reinforcement (BAR), it has a growing membership of 450 companies and is the sectoral voice for mineral products. MPA membership is made up of the vast majority of independent SME companies throughout the UK, as well as the 9 major international and global companies. It covers 100% of GB cement production, 90% of aggregates production and 95% of asphalt and ready-mixed concrete production and 70% of precast concrete production. Each year the industry supplies £9 billion of materials and services to the £120 billion construction and other sectors. Industry production represents the largest materials flow in the UK economy and is also one of the largest manufacturing sectors.

The MPA annual survey of members' aggregate applications, appeals and decisions for the year 2010 is the basis for this, the first Annual Mineral Planning Survey (AMPS). However, it also presents some data derived from the Government-commissioned AM surveys and the Annual Aggregate Working Party reports. It relates only to aggregate production from England and Wales.

All MPA producer members were contacted to take part in this Survey. This year information was returned on a significant number of Section 73 applications and ROMP Reviews, which have been analysed separately. The main body of the Report therefore deals with applications for new extraction. Any pre-1997 statistics that were used relate to the former BACMI members only. Statistics for 1997 to 2006 relate to QPA members only.

The MPA recognises that there could be shortcomings in the presentation of data, not least of which is the fact that some parts of the information used is not as recent as others. It is hoped that the current uncertainty regarding the information gathering work of the aggregate working parties will be dealt with before the next AMPS survey is published. Nevertheless, the MPA believe that the significant trends which the AMPS demonstrates, are valid.

Our aim will be to improve the accuracy of these reports as data improves and in the light of comments we receive on this the first published AMPS report.

## SECTION ONE - SCALE OF SURVEY

In 2010 there was a 56% response rate to the MPA planning survey from members with quarrying interests. This was the same as in 2009 but significantly above the long term average of 45%. The survey recorded a total of 88 sites, several of which were carried forward from previous returns. Of these, 78% were sand and gravel and 22% were crushed rock.

The number of crushed rock applications handled by mineral planning authorities continues to be smaller than sand and gravel applications. Since 1999 there has been a marked drop in the average number of applications being handled for aggregates. Planning applications averaged 150 each year before 1999 and 91 for subsequent years, a drop of about 40%. 2010 represented a near average year in terms of applications data captured by the survey.

## SECTION TWO - TRENDS IN DECISIONS

### SAND AND GRAVEL

Only 8 applications were submitted in 2010 which followed the downward trend shown over previous years and was a third of the long term average of 24 applications a year. Approvals were also down at 11, or 50% below the long term average. 2 appeals were allowed and none was dismissed, pending or withdrawn, giving a 15 year average of 80% being allowed. The number of applications on which a decision was pending at the year-end stayed at 37; or 14% below the long term average of 43. There were no refusals and 2 withdrawals. Overall, sand and gravel applications submitted, approved, refused, pending and withdrawn were 29% below the long term trend of 70.

TABLE 1 - SAND AND GRAVEL APPLICATIONS SUBMITTED (numbers)

	1996	1997	1998	1999	2000	2001	2002	2003	2004	2005	2006	2007	2008	2009	2010
Submitted (each year)	25	27	24	29	40	25	29	32	30	32	24	23	24	17	8

**TABLE 2 - SAND AND GRAVEL APPLICATION DECISIONS/STATUS (numbers)**

Type of Decision	1996	1997	1998	1999	2000	2001	2002	2003	2004	2005	2006	2007	2008	2009	2010
Approved	29	18	39	24	30	28	27	19	20	28	15	28	26	21	11
Refused	2	1	1	3	1	5	7	6	3	4	1	1	0	4	0
Pending	36	62	46	32	49	49	28	39	50	56	52	40	45	37	37
Withdrawn	2	2	2	2	1	2	2	1	2	1	0	1	0	4	2
<b>Total</b>	<b>69</b>	<b>83</b>	<b>88</b>	<b>61</b>	<b>81</b>	<b>84</b>	<b>64</b>	<b>65</b>	<b>75</b>	<b>89</b>	<b>68</b>	<b>70</b>	<b>71</b>	<b>66</b>	<b>50</b>

**TABLE 3 - SAND AND GRAVEL APPEAL DECISIONS/STATUS (numbers)**

Type of Decision	1996	1997	1998	1999	2000	2001	2002	2003	2004	2005	2006	2007	2008	2009	2010
Allowed	1	3	1	3	1	1	0	3	1	2	1	0	2	1	2
Dismissed	0	0	0	0	0	0	2	1	0	0	0	0	1	0	0
Pending	2	2	2	1	0	1	6	4	1	2	1	2	1	0	0
Withdrawn	0	0	0	0	0	0	0	0	0	0	0	0	0	0	0
<b>Total</b>	<b>3</b>	<b>5</b>	<b>3</b>	<b>4</b>	<b>1</b>	<b>2</b>	<b>8</b>	<b>8</b>	<b>4</b>	<b>4</b>	<b>2</b>	<b>2</b>	<b>4</b>	<b>1</b>	<b>2</b>

## CRUSHED ROCK

A single application was submitted for crushed rock extraction in 2010 making it the lowest number recorded in the survey for seven years. Approvals for crushed rock continued at a low level, whilst the number of applications on which a decision is pending remained at 11. This is slightly above the long term average of 10. There were no refusals or withdrawals for crushed rock applications in 2010 and no appeals.

**TABLE 4 - CRUSHED ROCK APPLICATIONS SUBMITTED (numbers)**

	1996	1997	1998	1999	2000	2001	2002	2003	2004	2005	2006	2007	2008	2009	2010
Submitted (each year)	15	12	10	13	2	4	9	6	0	5	9	4	7	7	1

**TABLE 5 - CRUSHED ROCK APPLICATION DECISIONS/STATUS (numbers)**

Type of Decision	1996	1997	1998	1999	2000	2001	2002	2003	2004	2005	2006	2007	2008	2009	2010
Approved	18	11	19	7	12	10	14	3	3	10	7	8	9	3	4
Refused	0	2	2	0	1	0	2	2	2	0	0	0	0	0	0
Pending	25	24	17	18	16	15	8	8	4	6	16	12	9	11	11
Withdrawn	0	0	1	0	0	0	0	0	0	0	0	0	0	0	0
<b>Total</b>	<b>43</b>	<b>37</b>	<b>39</b>	<b>25</b>	<b>29</b>	<b>25</b>	<b>24</b>	<b>13</b>	<b>9</b>	<b>16</b>	<b>23</b>	<b>20</b>	<b>18</b>	<b>14</b>	<b>15</b>

**TABLE 6 - CRUSHED ROCK APPEAL DECISIONS/STATUS (numbers)**

Type of Decision	1996	1997	1998	1999	2000	2001	2002	2003	2004	2005	2006	2007	2008	2009	2010
Allowed	0	0	0	0	0	0	0	1	1	1	0	0	0	0	0
Dismissed	0	0	0	0	0	0	0	1	0	0	0	1	0	0	0
Pending	0	0	0	0	0	1	1	0	0	0	1	0	0	0	0
Withdrawn	0	0	0	0	0	0	0	0	0	0	0	0	0	0	0
<b>Total</b>	<b>0</b>	<b>0</b>	<b>0</b>	<b>0</b>	<b>0</b>	<b>1</b>	<b>1</b>	<b>2</b>	<b>1</b>	<b>1</b>	<b>1</b>	<b>1</b>	<b>0</b>	<b>0</b>	<b>0</b>

### **ALL AGGREGATES AND ROMP/SECTION 73 APPLICATIONS**

For all aggregates the total number of applications approved or allowed on appeal in 2010 was 17, which was below the long-term average. The total number of applications refused or withdrawn was 2. The total number of applications on which a decision was pending at the year-end was 48 in 2010, compared with the long term average of 53.

In 2010 there were 18 ROMP and Section 73 applications recorded in the survey including 9 submitted during the year. Of those, 5 had been pending for an average of 63 months, one having been submitted in 1998. 1 ROMP was determined in the year. Section 73 applications that were decided in 2010 took an average of 4 months to determine.

**TABLE 7: STATUS OF ALL APPLICATIONS 2010**

Status	Sand & Gravel Tables 2 & 3	Crushed Rock Tables 5 & 6	Total
Approved	13	4	17
Refused	0	0	0
Pending	37	11	48
Withdrawn	2	0	2
<b>Total</b>	<b>52</b>	<b>15</b>	<b>67</b>

**TABLE 8: NUMBERS OF ROMP & SECTION 73 APPLICATIONS 2012**

Status	ROMP	Section 73	Total
Submitted	1	8	9
Approved	1	3	4
Pending	5	9	14
Withdrawn	0	0	0
<b>Total</b>	<b>6</b>	<b>12</b>	<b>18</b>

**TABLE 9: ALL AGGREGATES - 10 YR RUNNING AVERAGES 1996-2010 (see Chart 1)**

Type of Decision	1996	1997	1998	1999	2000	2001	2002	2003	2004	2005	2006	2007	2008	2009	2010
Approved	45	43	45	43	42	42	41	39	37	37	34	35	33	32	29
Refused	6	6	5	5	5	5	5	4	4	4	4	4	4	4	4
Pending	90	89	86	83	80	75	67	62	60	59	60	56	55	55	53
Withdrawn	7	6	6	5	4	4	3	2	2	2	2	2	1	1	2
<b>Total</b>	<b>148</b>	<b>144</b>	<b>142</b>	<b>137</b>	<b>131</b>	<b>125</b>	<b>117</b>	<b>108</b>	<b>103</b>	<b>102</b>	<b>100</b>	<b>97</b>	<b>93</b>	<b>92</b>	<b>88</b>
(Submitted)	58	56	53	52	47	41	39	39	37	37	36	35	35	33	30



**Chart 1: 10 yr Running Average of Application Status & Applications Submitted 1996-2010  
England & Wales (All Aggregates)**

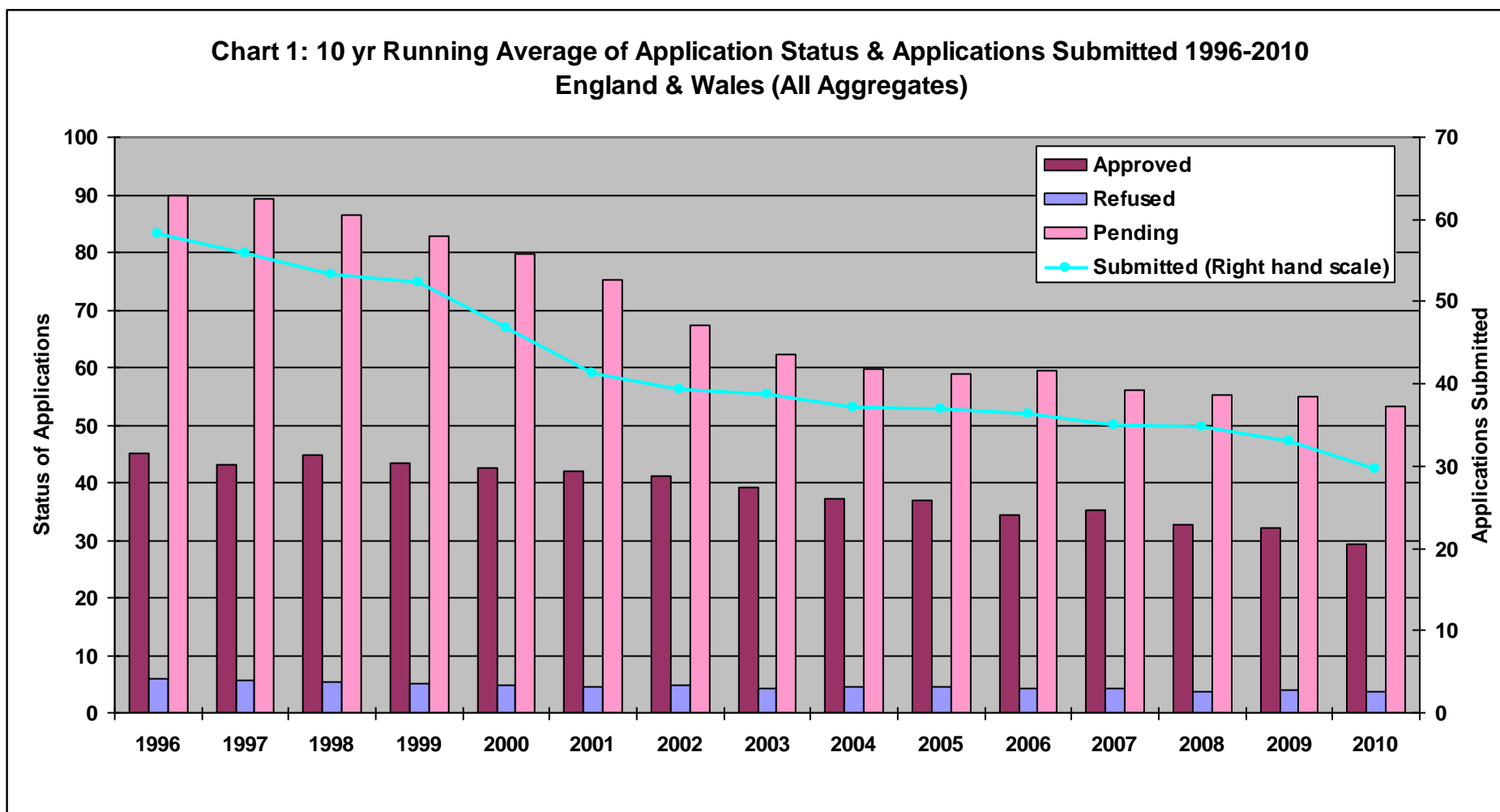


Table 9 and Chart 1 shows the long term (10 year) running average of application status for each year for all aggregates. This is compared to the long term running average in numbers of applications submitted. A marked downward trend in applications is evident.

## SECTION THREE - TONNAGES ASSOCIATED WITH DECISIONS

In 2010 the tonnage of sand and gravel approved fell for the third year running to 14 million tonnes (Mt), compared with a long term approval rate of 31 million tonnes per annum. The sand and gravel tonnage on which a decision was pending remained at 78 Mt but was still below the long term average.

The tonnage of crushed rock approved in 2010 increased to 42 Mt but this was still only 32% of the long term average tonnage approved. The tonnage refused was zero for a record sixth year in a row. The tonnage pending remained at 193 Mt for the second year running.

The total tonnage approved consequently rose from the previous year's low point but still continued the long term decline of about half the long term average (Chart 2). The total tonnage refused permission was zero. The overall tonnage pending was almost 28% above the long term average.

Long term trends in replenishment rates (Chart 3) show that long term average sand and gravel replenishment rates have not been at parity for at least 10 years, whilst for crushed rock long term replenishment has fallen below parity for the last 7 years. In 2010 crushed rock long term replenishment stood at 67% over 10 years, and for sand and gravel, 49%.

**TABLE 10 - TONNAGES APPROVED, REFUSED AND PENDING 1996-2010 (MILLION TONNES)**

Sand and Gravel	1996	1997	1998	1999	2000	2001	2002	2003	2004	2005	2006	2007	2008	2009	2010
Approved	84	18	48	39	31	44	58	15	17	41	15	61	24	21	14
Refused	3	1	4	5	1	6	19	11	5	8	5	7	0	5	0
Pending	84	117	98	64	83	88	54	91	103	110	111	55	75	78	78
<b>Total</b>	<b>171</b>	<b>136</b>	<b>150</b>	<b>108</b>	<b>115</b>	<b>138</b>	<b>131</b>	<b>117</b>	<b>125</b>	<b>159</b>	<b>131</b>	<b>123</b>	<b>99</b>	<b>104</b>	<b>92</b>

Crushed Rock	1996	1997	1998	1999	2000	2001	2002	2003	2004	2005	2006	2007	2008	2009	2010
Approved	267	74	252	30	168	56	73	5	3	52	21	419	58	6	42
Refused	0	7	10	0	5	5	5	9	10	0	0	0	0	0	0
Pending	215	257	156	107	118	76	52	85	50	57	482	67	29	193	193

<b>Total</b>	<b>482</b>	<b>338</b>	<b>418</b>	<b>137</b>	<b>291</b>	<b>137</b>	<b>130</b>	<b>99</b>	<b>63</b>	<b>109</b>	<b>503</b>	<b>486</b>	<b>87</b>	<b>199</b>	<b>235</b>
--------------	------------	------------	------------	------------	------------	------------	------------	-----------	-----------	------------	------------	------------	-----------	------------	------------

<b>All Aggregates</b>	<b>1996</b>	<b>1997</b>	<b>1998</b>	<b>1999</b>	<b>2000</b>	<b>2001</b>	<b>2002</b>	<b>2003</b>	<b>2004</b>	<b>2005</b>	<b>2006</b>	<b>2007</b>	<b>2008</b>	<b>2009</b>	<b>2010</b>
Approved	351	92	300	69	199	100	131	20	20	93	36	480	82	27	56
Refused	3	8	14	5	6	11	24	20	15	8	5	7	0	5	0
Pending	299	374	254	171	201	164	106	176	153	167	593	122	104	271	271
<b>Total</b>	<b>683</b>	<b>474</b>	<b>568</b>	<b>245</b>	<b>406</b>	<b>275</b>	<b>261</b>	<b>216</b>	<b>188</b>	<b>268</b>	<b>634</b>	<b>609</b>	<b>186</b>	<b>303</b>	<b>327</b>

**TABLE 11: TONNAGE 10 YR RUNNING AVERAGES 1996-2010 (see Chart 2)**

<b>All Aggregates</b>	<b>1996</b>	<b>1997</b>	<b>1998</b>	<b>1999</b>	<b>2000</b>	<b>2001</b>	<b>2002</b>	<b>2003</b>	<b>2004</b>	<b>2005</b>	<b>2006</b>	<b>2007</b>	<b>2008</b>	<b>2009</b>	<b>2010</b>
Approved	245	219	231	211	209	198	192	171	150	138	106	145	123	119	105
Refused	30	26	25	22	20	19	21	13	14	11	12	12	10	10	10
Pending	604	566	521	478	447	419	347	303	263	207	236	211	196	206	213
<b>Total</b>	<b>885</b>	<b>816</b>	<b>781</b>	<b>714</b>	<b>680</b>	<b>639</b>	<b>563</b>	<b>489</b>	<b>430</b>	<b>358</b>	<b>354</b>	<b>367</b>	<b>329</b>	<b>335</b>	<b>327</b>

**TABLE 12: REPLENISHMENT RATES GB 2000-2010 (see Chart 3)**

<b>Percentages</b>	<b>Mineral</b>	<b>2001</b>	<b>2002</b>	<b>2003</b>	<b>2004</b>	<b>2005</b>	<b>2006</b>	<b>2007</b>	<b>2008</b>	<b>2009</b>	<b>2010</b>
<b>Annual Replenishment</b>	<b>Sand &amp; Gravel</b>	58	79	21	24	59	23	87	46	53	35
	<b>Crushed Rock</b>	53	70	5	3	48	20	358	56	7	50
<b>Running Average Replenishment</b>	<b>Sand &amp; Gravel</b>	76	76	71	67	59	44	50	49	49	49
	<b>Crushed Rock</b>	130	124	112	97	90	68	97	80	78	67

NB. Replenishment rates are calculated by dividing MPA members' tonnage approved each year by members' output as recorded by MPA survey.

**Chart 2: 10 yr Running Average Tonnages Approved, Refused & Pending 1996-2010  
England & Wales (All Aggregates)**

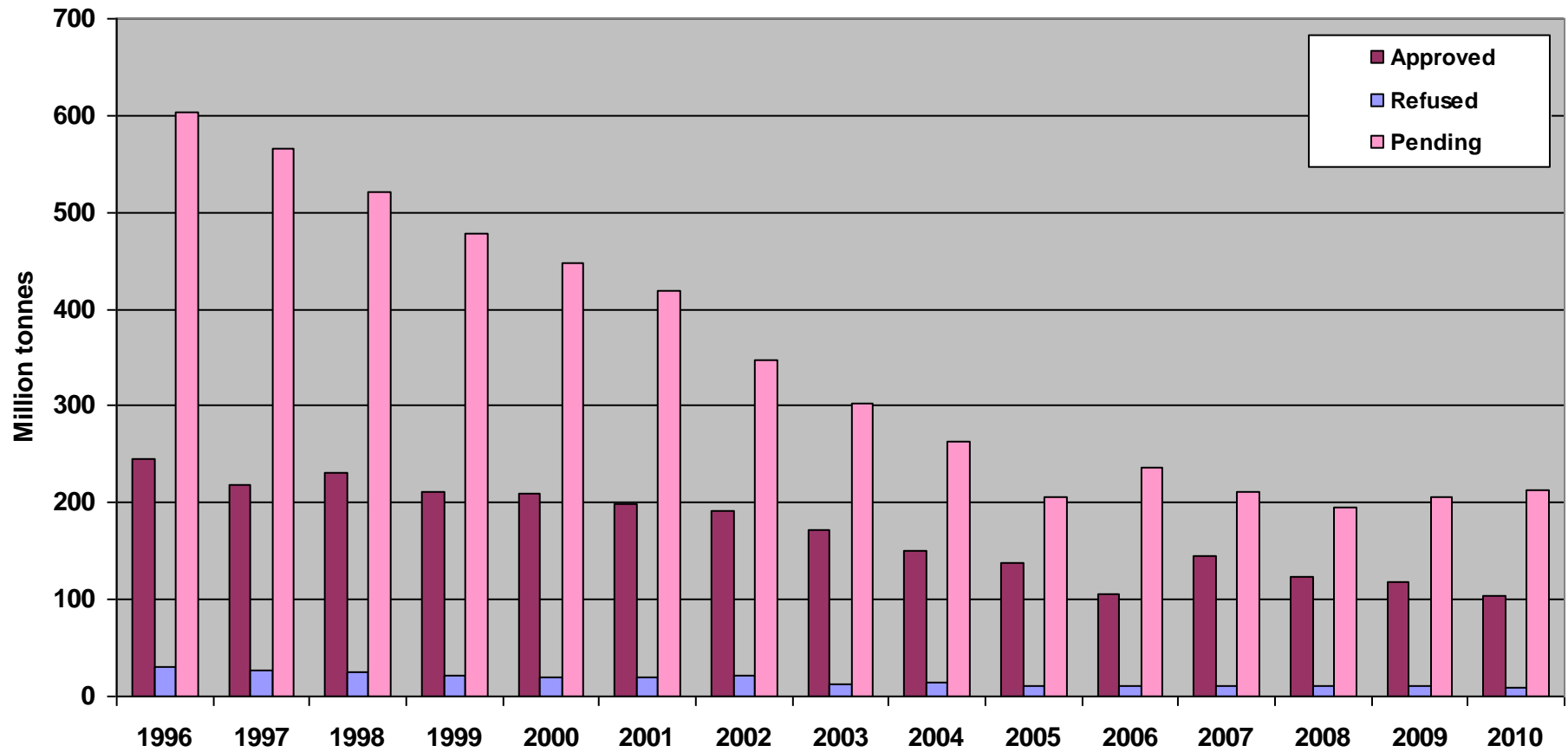
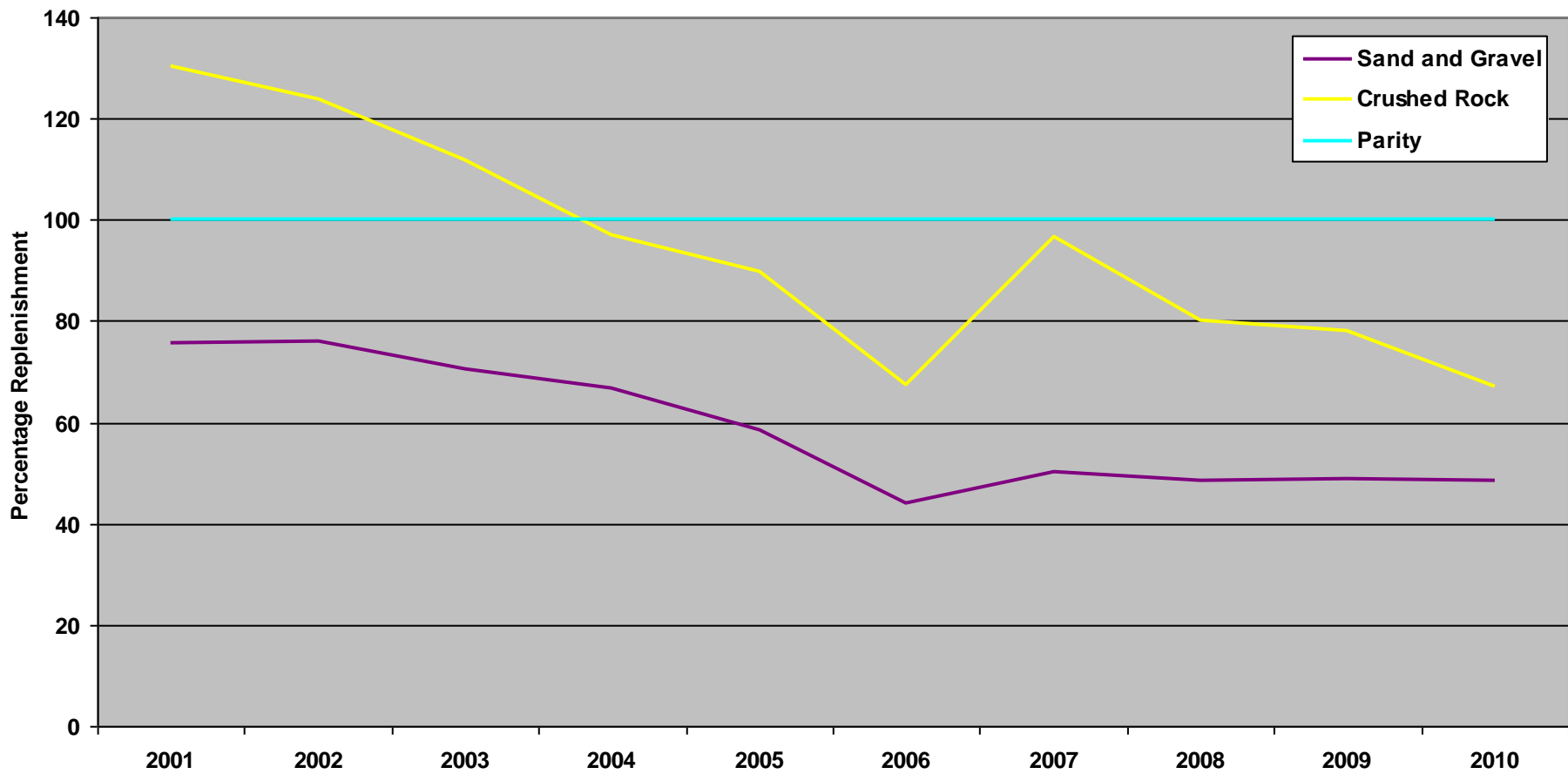


Chart 3: 10 yr Running Average Mineral Replenishment Rates (GB) 2001-2010



## SECTION FOUR - DECISION TIMES

The overall percentage of approvals determined within 6 months was only 6.6% in 2010. The overall percentage of approvals taking over 12 months to determine rose from 54% in 2009 to 73% in 2010. The average time taken from the application being submitted to approval for sand and gravel applications in 2010 was 16 months. For crushed rock, in 2010 the average period was 26 months. The long term average pre-application period in 2010 for sand and gravel was 10 months, and for crushed rock, 12 months. The corresponding times for long term averages from submission to determination were 20 months and 21 months respectively.

Chart 4 shows the long term running averages for time to determine applications. This demonstrates a small but distinct trend of an increasing proportion of applications taking over 12 months to determine at the expense of applications taking 4 to 12 months.

**TABLE 13 - DURATION OF APPROVAL PROCESS 1996-2010 (No.s of applications) - SAND AND GRAVEL**

Sand and Gravel	1996	1997	1998	1999	2000	2001	2002	2003	2004	2005	2006	2007	2008	2009	2010
0-4 months	3	2	1	2	6	2	3	5	5	3	1	1	5	2	1
4-6 months	4	2	5	1	4	1	2	3	2	3	0	4	5	3	0
6-8 months	3	4	4	1	3	2	0	2	3	1	0	2	0	3	1
8-10 months	0	0	1	3	0	2	4	1	1	3	2	0	1	2	1
10-12 months	2	2	3	2	2	6	2	1	1	2	1	2	2	0	1
12 months +	18	11	24	15	15	15	16	7	8	16	11	19	13	11	7
<b>Total</b>	<b>30</b>	<b>21</b>	<b>39</b>	<b>24</b>	<b>30</b>	<b>28</b>	<b>27</b>	<b>19</b>	<b>20</b>	<b>28</b>	<b>15</b>	<b>28</b>	<b>26</b>	<b>21</b>	<b>11</b>

**TABLE 14 - DURATION OF APPROVAL PROCESS 1996-2010 (No.s of applications) - CRUSHED ROCK**

Crushed Rock	1996	1997	1998	1999	2000	2001	2002	2003	2004	2005	2006	2007	2008	2009	2010
0-4 months	0	1	2	1	0	0	1	1	0	2	2	2	1	0	0
4-6 months	1	1	2	2	0	1	4	0	0	1	1	1	1	0	0
6-8 months	0	1	2	0	1	1	0	0	1	0	1	1	0	1	0
8-10 months	0	1	0	0	1	2	1	0	0	0	1	0	0	0	0
10-12 months	3	2	0	1	0	0	1	1	0	0	1	0	0	0	0
12 months +	14	5	13	3	10	6	10	2	2	7	1	4	7	2	4
<b>Total</b>	<b>18</b>	<b>11</b>	<b>19</b>	<b>7</b>	<b>12</b>	<b>10</b>	<b>17</b>	<b>4</b>	<b>3</b>	<b>10</b>	<b>7</b>	<b>8</b>	<b>9</b>	<b>3</b>	<b>4</b>

**TABLE 15 - ANNUAL AVERAGE DURATION OF APPROVAL PROCESS 1996-2010 - SAND AND GRAVEL (MONTHS)**

Sand and Gravel	1996	1997	1998	1999	2000	2001	2002	2003	2004	2005	2006	2007	2008	2009	2010
Pre-App Consultation	6	7	8	10	11	9	8	7	8	8	8	10	17	13	12
Determination Period	23	11	17	21	21	20	19	17	14	23	27	23	17	23	16
<b>Average Total*</b>	<b>29</b>	<b>18</b>	<b>25</b>	<b>31</b>	<b>32</b>	<b>29</b>	<b>27</b>	<b>24</b>	<b>22</b>	<b>31</b>	<b>35</b>	<b>33</b>	<b>34</b>	<b>36</b>	<b>28</b>

**TABLE 16 - ANNUAL AVERAGE DURATION OF APPROVAL PROCESS 1996-2010 - CRUSHED ROCK (MONTHS)**

Crushed Rock	1996	1997	1998	1999	2000	2001	2002	2003	2004	2005	2006	2007	2008	2009	2010
Pre-App Consultation	11	10	12	12	14	13	11	14	16	10	6	9	23	14	10
Determination Period	23	25	27	11	26	20	24	19	24	21	12	13	31	18	26
<b>Average Total*</b>	<b>34</b>	<b>35</b>	<b>39</b>	<b>23</b>	<b>40</b>	<b>33</b>	<b>35</b>	<b>33</b>	<b>40</b>	<b>31</b>	<b>18</b>	<b>22</b>	<b>54</b>	<b>32</b>	<b>36</b>

\*Note - Not all returns include information on pre-application consultations, the average is of the number of applications that reported details of such consultations

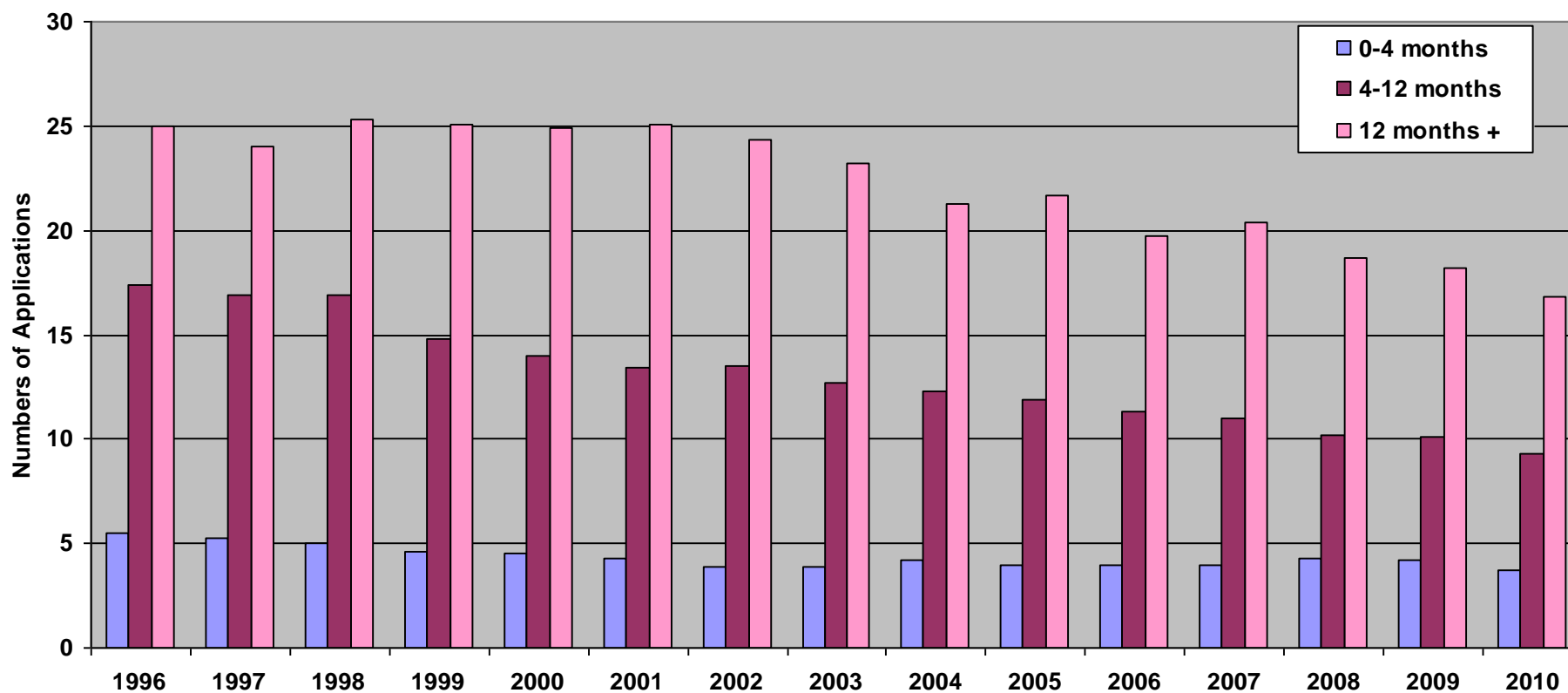
**TABLE 17: RUNNING AVERAGE OF APPLICATIONS IN 'TIME TO PROCESS' CATEGORIES 1996-2010 (see Chart 4)**

All Aggregates	1996	1997	1998	1999	2000	2001	2002	2003	2004	2005	2006	2007	2008	2009	2010
0-4 months	6	5	5	5	5	4	4	4	4	4	4	4	4	4	4
5-12 months	17	17	17	15	14	13	14	13	12	12	11	11	10	10	9
12 months +	25	24	25	25	25	25	24	23	21	22	20	20	19	18	17
<b>Total</b>	<b>48</b>	<b>46</b>	<b>47</b>	<b>45</b>	<b>43</b>	<b>43</b>	<b>42</b>	<b>40</b>	<b>38</b>	<b>38</b>	<b>35</b>	<b>35</b>	<b>33</b>	<b>33</b>	<b>30</b>

**TABLE 18: RUNNING AVERAGE TIME FROM SUBMISSION TO APPROVAL (MONTHS) 1996-2010 (see Chart 5)**

All Aggregates	1996	1997	1998	1999	2000	2001	2002	2003	2004	2005	2006	2007	2008	2009	2010
Average Time S&G	29	18	25	31	32	29	27	24	22	31	35	33	34	36	28
Average Time CR	34	35	39	23	40	33	35	33	40	31	18	22	54	32	36
Running Average S&G	29	27	27	27	28	28	28	28	27	27	27	29	30	30	30
Running Average CR	33	34	34	33	34	34	34	34	34	34	33	31	33	34	33

**Chart 4: 10 yr Running Average of Applications Approved in 'Time To Determination' Categories  
(All Aggregates) 1996-2010**





**Chart 5: Average Times From Submission to Approval For All Aggregates 1996-2010**

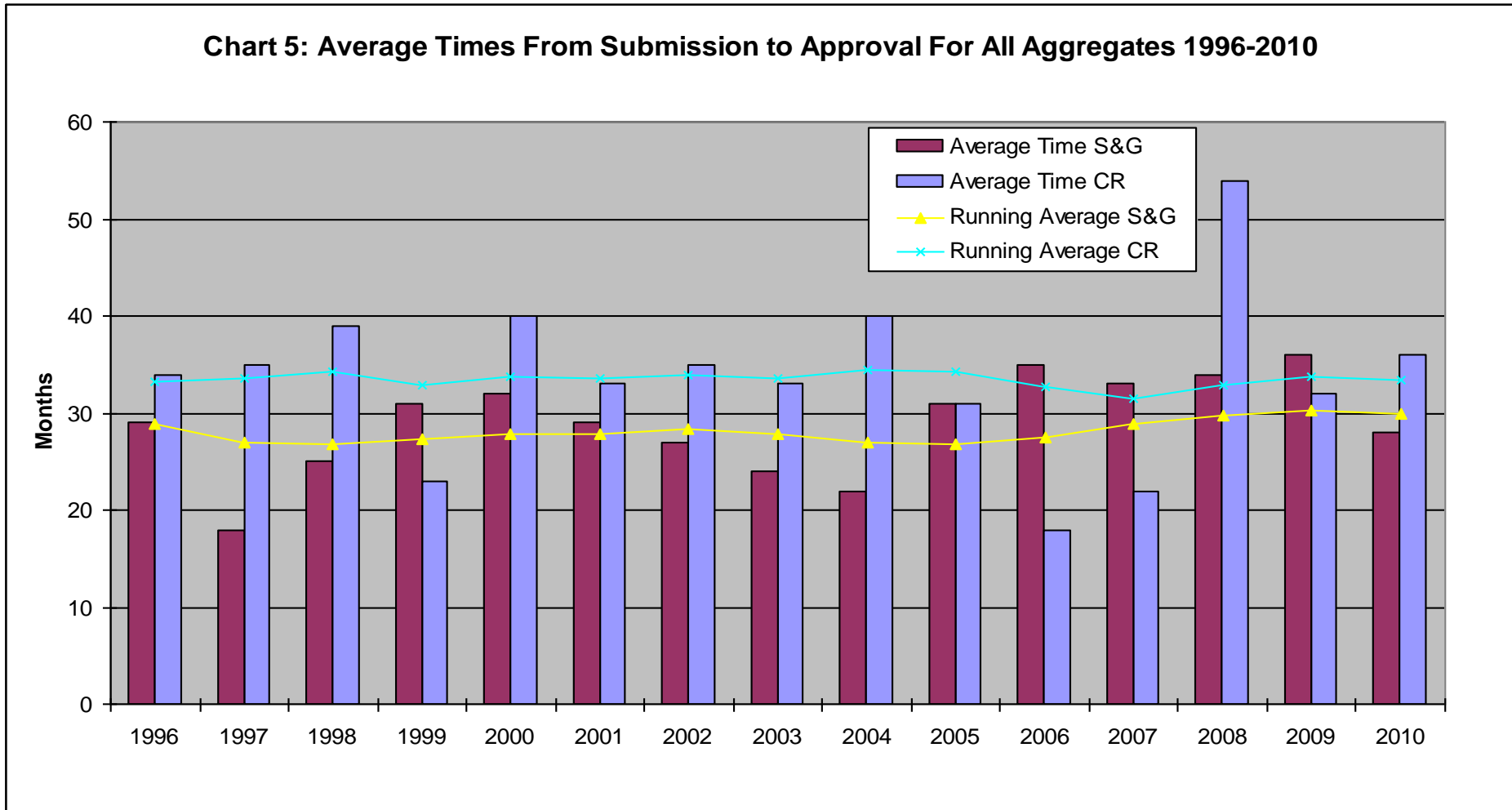


Chart 5 takes data from Table 18 to show that the long term average length of time applications are taking to get through the system to approval has barely changed over 15 years, with sand and gravel applications hovering consistently around 29-30 months and crushed rock 33-34 months.

## SECTION FIVE - LANDBANKS

The landbank statistics shown are all derived from the latest Aggregate Working Party annual reports that were available at the time that the AMPS report was compiled, which were for 2009, except where marked in red which were for 2008.

**TABLE 19: LANDBANKS - ENGLAND**

<b>2009 (2008)</b>	<b>S&amp;G</b>	<b>S&amp;G</b>	<b>S&amp;G</b>	<b>CR</b>	<b>CR</b>	<b>CR</b>	<b>Region</b>
<b>MPA</b>	<b>Prod'n</b>	<b>Reserves</b>	<b>Landbank</b>	<b>Prod'n</b>	<b>Reserves</b>	<b>Landbank</b>	
Suffolk CC	0.96	13.09	8.84				EE
Hertfordshire CC	1.20	10.62	8.63				EE
Norfolk CC	1.38	18.02	7.90	0.07	1.93	12.06	EE
Bedford B, C Beds & Luton	0.94	20.36	8.23				EE
Cambs CC & Peterboro'	2.32	49.92	17.96	0.27	1.63	5.43	EE
Essex CC, Thurrock, Southend	2.80	36.71	9.15				EE
Leicestershire/Rutland	0.84	12.82	8.50	1.09	35.13	19.58	EM
Northamptonshire CC	0.17	6.21	8.00	0.16	14.04	46.78	EM
Derbyshire CC	0.91	9.85	6.60	7.37	808.78	93.00	EM
Derbys/PDNP <b>IGN &amp; SST</b>				0.00	1.32		EM
Leics <b>IGN</b>				10.68	307.08	20.33	EM
Lincolnshire CC	1.99	22.82	6.96	0.46	28.78	26.20	EM
Nottinghamshire CC	1.60	28.86	7.56	0.00	3.40	33.50	EM
Peak District NPA				1.74	92.51	22.80	EM
LONDON	0.58	2.00	2.00				L
Co Durham	0.20	3.72	11.90	1.92	137.89	37.10	NE
Northumberland CC	0.42	8.05	9.80	1.15	76.43	36.40	NE
Tyne & Wear							NE
Tees Valley JSU	0.13	3.56	9.90	0.31	2.23	5.90	NE
Cumbria CC	0.52	13.95	19.93	3.07	169.01	41.21	NW
Lancashire CC	0.42	8.98	17.96	2.52	136.70	29.73	NW
Cheshire	0.87	12.76	6.48	0.00	4.42	34.00	NW
Manchester/Merseyside	0.37	6.10	23.46	0.30	17.23	10.44	NW
Oxfordshire CC	0.63	9.06	4.30	0.43	11.89	33.30	SE

<b>2009 (2008)</b>	<b>S&amp;G</b>	<b>S&amp;G</b>	<b>S&amp;G</b>	<b>CR</b>	<b>CR</b>	<b>CR</b>	<b>Region</b>
<b>MPA</b>	<b>Prod'n</b>	<b>Reserves</b>	<b>Landbank</b>	<b>Prod'n</b>	<b>Reserves</b>	<b>Landbank</b>	
Surrey CC	0.85	10.87	10.00	0.87	36.11		SE
Kent	1.36	16.75	11.80				SE
Berkshire JSPU	0.84	9.99	7.50				SE
Buckinghamshire CC	0.71	11.58	11.00				SE
Hants, Soton & Portsmouth	1.05	6.79	3.30				SE
IOW	0.06	1.40	14.00				SE
E Sussex & BH	0.21	7.15					SE
Medway							SE
Milton Keynes							SE
W Sussex CC	0.29	5.46	5.30				SE
Wiltshire CC & Swindon	0.45	5.60	6.67				SW
Devon CC	0.50	8.74	14.10	1.73	188.08	89.56	SW
Cornwall CC				1.00	115.21	89.31	SW
Somerset CC				9.71	335.88	30.99	SW
Gloucestershire CC				0.93	7.11	8.57	1.17
North Somerset				1.62	192.31	49.10	SW
South Gloucestershire				1.75			SW
Dorset CC	1.27	19.07	12.97	0.27	8.46	31.33	SW
Staffordshire CC	3.76	79.22	11.99	1.03	160.48	115.00	WM
Warwickshire CC	0.75	3.95	3.78		29.13	33.10	WM
W Midlands County	0.38	5.06	10.00				WM
Herefordshire CC	0.13	5.15	18.20	0.22	14.99	43.25	WM
Worcestershire CC	0.52	3.65	4.19				
Shropshire CC	0.67	14.42	17.56	1.77	115.95	39.32	WM
Yorks Dales NPA				2.70	106.24	28.70	YH
North Yorkshire CC	1.70	18.47	7.40	2.60	103.90	28.30	YH
E Riding/N Lincs	0.90	10.83	10.10	0.10	1.71	6.20	YH
W Yorkshire	0.50	0.33	9.70	0.90	27.14	28.30	YH
S Yorkshire		5.03		1.40	63.41	27.50	YH

**TABLE 20: LANDBANKS - CHANGE (1997 - 2009)**

**National Landbanks (Mt) England & Wales  
Active Sites**

<b>Material</b>	<b>Table 4 AM 1997</b>	<b>Table 12 AM 2009</b>	<b>% diff</b>
Crushed Rock	5214	3208	-38.5
Sand & Gravel	748	436	-41.7
<b>Total</b>	<b>5962</b>	<b>3644</b>	<b>-38.9</b>

## SECTION SIX - DEVELOPMENT PLAN PROGRESS

LEGEND	
Grey fill	Stage reached
Date in black bold	MPA Responded
Date in Black	LDS Programme date
Date in red bold	Missed Programme date

**TABLE 21:**  
EAST OF ENGLAND

### CORE STRATEGIES

AUG 2012

MPA	Region	Other Inclusions?	I&O	Pref O	Prop Sub	Submission	EiP	Adoption	Status
Bedford B, C Beds & Luton	EE	& Waste		Apr-09	Dec-11	Aug-12	Dec-12	Jul-13	
Cambs CC & Peterboro'	EE	& Waste & DC Pol						Jul-11	Adopted
Essex CC	EE	Sites and Polcies	Jan-09	Dec-10	Jan-13	Jun-13	Dec-13	Jul-14	
Hertfordshire CC	EE								Start 2013
Norfolk CC	EE	& Dev Con Policies		Feb-08	May-10	Feb-11	May-11	Sep-11	Adopted
Southend	EE							Dec-07	Adopted
Southend (Review)	EE		Dec-11		Jul-12	Feb-13	Jun-13	Nov-13	
Suffolk CC	EE							Sep-08	Adopted
Thurrock	EE		Jun-09		Feb-10	Apr-10	Mar-11	Dec-11	Adopted

**TABLE 22:**  
EAST OF ENGLAND

### OTHER DPDs

AUG 2012

MPA	Region	DPD Title	I&O	Pref O	Prop Sub	Submission	EiP	Adoption	Status
Bedford B, C Beds & Luton	EE	Gen Env Policies	Jul-13		Mar-14	Jul-14	Nov-14	Jul-15	
Cambs CC & Peterboro'	EE	Site Allocs	Mar-09		Feb-10	Jul-10	Jun-11	Feb-12	Adopted
Essex CC	EE	NO OTHER DPDs							
Hertfordshire CC	EE	NO OTHER DPDs							
Norfolk CC	EE	Site Allocs	Feb-08	Jun-11	May-12	May-13	Jun-13	Sep-13	
Southend	EE	Devel Management				Mar-11	Mar-12	Jul-12	
Southend	EE	Site Allocs	Dec-11		Jul-12	Feb-13	Jun-13	Nov-13	
Suffolk CC	EE	Site Allocs						Sep-09	Adopted
Thurrock	EE	Mins & Waste	Feb-10	Aug-11	Feb-12	Jun-12	Oct-12	Apr-13	
Thurrock	EE	Site Allocs & Dev Cont	Mar-12						

**TABLE 23:  
EAST MIDLANDS**

**CORE STRATEGIES**

**AUG 2012**

MPA	Region	Other Inclusions?	I&O	Pref O	Prop Sub	Submission	EiP	Adoption	Status
Derbyshire CC	EM	& Waste	Jun-10	Dec-12					
Leicestershire CC	EM	& Dev Con Policies						Oct-09	Adopted
Lincolnshire CC	EM	& Dev Con Policies	Dec-09	Oct-12	Jun-13	Dec-13	Mar-14	Dec-14	
Northamptonshire CC	EM	& Waste						May-10	Adopted
Northamptonshire CC (Partial Review)	EM	Min & Waste Plan	Aug-12	Feb-13	Sep-13	Nov-13	Mar-14	May-14	
Nottinghamshire CC	EM	& Dev Con Policies	Jan-12	Nov-12	Apr-13	Aug-13	Jan-14	Jun-14	
Peak District NPA	EM							Oct-11	Adopted
Rutland	EM							Jul-11	Adopted

**TABLE 24:  
EAST MIDLANDS**

**OTHER DPDs**

**AUG 2012**

MPA	Region	DPD Title	I&O	Pref O	Prop Sub	Submission	EiP	Adoption	Status	
Derbyshire CC	EM	NO OTHER DPDs								
Leicestershire CC	EM	Site Allocs							Work	
Lincolnshire CC	EM	Site Locations	Jun-10						Start 2013	
Northamptonshire CC	EM	Locations						Mar-11	Adopted	
Northamptonshire CC	EM	Control & Manage't						Jun-11	Adopted	
Northamptonshire CC	EM	Dev & Imple'n SPD						Sep-11	Adopted	
Nottinghamshire CC	EM	Min Safeguarding	May include in Core Strategy							Not started
Nottinghamshire CC	EM	Site Allocs	May include in Core Strategy							Not started
Peak District NPA	EM	Devel Man Policies			Jul-12	Oct-12	Feb-13	Jul-13		
Rutland	EM	Mins Core Strat						Oct-10	Adopted	
Rutland	EM	Site Allocs & Polcies	Sep-11	Sep-12	Oct-12	Feb-13	Jun-13	Dec-13		

**TABLE 25:  
LONDON**

**CORE STRATEGIES**

**AUG 2012**

MPA	Region	Other Inclusions?	I&O	Pref O	Prop Sub	Submission	EiP	Adoption	Status
Barking & Dagenham	L							Jul-10	Adopted
Bexley	L		Nov-06	Feb-10	Nov-10	May-11	Jul-11	Feb-12	Adopted
Ealing	L		Sep-09		Nov-10	Jul-11	Nov-11	Apr-12	Adopted
Havering	L	& Dev Con Pol						Jul-08	Adopted
Havering (Review)	L		Jun-11						
Hillingdon	L		Jul-07	Jun-10	Feb-11	Oct-11	Mar-12	Jul-12	
Hounslow	L		May-07	Jul-11	May-12	Jul-12	Dec-12	May-13	
Kingston on Thames	L			Nov-09	Jan-11	May-11	Sep-11	Apr-12	Adopted
Redbridge	L							Mar-08	Adopted
Redbridge Review	L		Oct-11	Nov-11	Jun-12	Oct-12	Jan-13	Jun-13	
Richmond	L							Apr-09	Adopted

**TABLE 26:  
LONDON**

**OTHER DPDs**

**AUG 2012**

MPA	Region	DPD Title	I&O	Pref O	Prop Sub	Submission	EiP	Adoption	Status
Barking & Dagenham	L	Site Specific Allocations						Dec-10	Adopted
Barking & Dagenham	L	DC Policies						Jun-11	Adopted
Bexley	L	Development Standards			Nov-12	May-13	Aug-13	Feb-14	not started
Bexley	L	Site Specific Allocs			Nov-12	May-13	Aug-13	Feb-14	
Ealing	L	Development Sites	Sep-10		Jun-12	Sep-12	Nov-12	Jul-13	
Ealing	L	Man Policies	Sep-10		Jun-12	Sep-12	Nov-12	Jul-13	
Havering	L	Sites for Minerals		Sep-10	May-11	Oct-11	Jan-12	Jun-12	No Information
Hillingdon	L	Dev Man DPD	Mar-12						No Information
Hillingdon	L	Site Allocs	Mar-12						No Information
Hounslow	L	Generic DC Policies		Jul-11	Oct-12	Jan-13	Jun-13	Oct-13	
Hounslow	L	Site Allocs		Jul-11	Oct-12	Jan-13	Jun-13	Oct-13	
Kingston	L	<b>NO OTHER DPDs</b>							
Redbridge	L	Primary Policies (inc Mins)						May-08	Adopted
Redbridge	L	Minerals DPD	Jul-10		Jan-12	Mar-12	Jul-12	Sep-12	
Richmond	L	Dev Man DPD						Nov-11	Adopted

**TABLE 27:  
NORTH EAST**

**CORE STRATEGIES**

**AUG 2012**

MPA	Region	Other Inclusions?	I&O	Pref O	Prop Sub	Submission	EiP	Adoption	Status
Durham CC	NE	& Dev Man Pol	Oct-09	Sep-12	Mar-13	Sep-13	Mar-14	Jun-14	
Gateshead	NE	jointly with N'castle	Sep-08	Sep-12					LDS out of date
N Tyneside	NE		Dec-06	Jul-10	Jul-11	Jan-12	Apr-12	Jan-13	
Newcastle	NE	jointly with Gates'd	Sep-08	Sep-12					LDS out of date
Northumberland NPA	NE	& Dev Con Policies						Mar-09	Adopted
Northumberland CC	NE		Aug-12	Jan-13	Apr-13	Jun-13		Jan-14	
S Tyneside	NE							Jun-07	Adopted
Sunderland	NE		Dec-05	Dec-07	Oct-10	Feb-11	Jul-11	Nov-11	No Information
Tees Valley JSU	NE							Sep-11	Adopted

**TABLE 28:  
NORTH EAST**

**OTHER DPDs**

**AUG 2012**

MPA	Region	DPD Title	I&O	Pref O	Prop Sub	Submission	EiP	Adoption	Status
Durham CC	NE	M&W Allocs	Aug-14	Apr-15	Nov-15	Mar-16	Jul-16	Dec-16	
Gateshead	NE	Site Allocs & Dev Man		Feb-12	Oct-12	Dec-12			
Newcastle	NE	Allocs & Infrastructure		Feb-12	Oct-12	Dec-12		Oct-13	
North Tyneside	NE	<b>NO OTHER DPDs</b>							
Northumberland CC	NE	Delivery (Site Allocs)							to follow CS
Northumberland NPA	NE	<b>NO OTHER DPDs</b>							
S Tyneside	NE	DM Policies	Jul-09		Jul-10	Dec-10	Jun-11	Dec-11	Adopted
S Tyneside	NE	Site Allocs	Jan-08	Jun-10	Jan-11	Jun-11	Oct-11	Apr-12	Adopted
Sunderland	NE	Site Allocs							no programme
Tees Valley JSU	NE	DC Policies & Site Allocs						Sep-11	Adopted



**TABLE 29:  
NORTH WEST**

**CORE STRATEGIES**

**AUG 2012**

MPA	Region	Other Inclusions?	I&O	Pref O	Prop Sub	Submission	EiP	Adoption	Status
Cheshire E	NW		Dec-10	Oct-12	Mar-13				Under Review
Cheshire W & Chester	NW		Jul-11	Sep-12	Jun-13	Jul-13	Oct-13	Feb-14	
Cumbria CC	NW	& Dev Con Policies						Apr-09	Adopted
GMGU Manchester	NW	Minerals Plan	Mar-10	Oct-10	Oct-11	Nov-11	Feb-12	Jan-13	Mods consult'n Oct 12
Lake District NPA	NW							Oct-10	Adopted
Lancashire CC	NW	& Waste						Feb-09	Adopted
Merseyside EAS	NW								No Information
Warrington	NW		Sep-07	Dec-11	May-12				LDS out of date

**TABLE 30:  
NORTH WEST**

**OTHER DPDs**

**AUG 2012**

MPA	Region	DPD Title	I&O	Pref O	Prop Sub	Submission	EiP	Adoption	Status
Cheshire E	NW	Site Allocs	Nov-13		Feb-14	Jun-14	Sep-14	Dec-14	
Cheshire W & Chester	NW	Min Policies and Allocs							no information
Cumbria CC	NW	Site Allocs						Jan-11	Adopted
Lake District NPA	NW	Site Allocs	Jun-09	Sep-11	Sep-12				
Lancashire CC	NW	DC Pols & Site Allocs	Jan-10		Jan-11	May-11	Sep-11	Mar-13	EiP suspended to Nov 12
Manchester	NW	NO OTHER DPDs							
Merseyside	NW	NO OTHER DPDs							
Warrington	NW	Allocations DPD	May-09	Nov-12	Feb-13	May-13	Jul-13	Dec-13	start Aug 12

**TABLE 31:  
SOUTH EAST**

**CORE STRATEGIES**

**AUG 2012**

MPA	Region	Other Inclusions?	I&O	Pref O	Prop Sub	Submission	EiP	Adoption	Status
Bracknell Forest	SE							Feb-08	Adopted
Buckinghamshire CC	SE			Mar-08	Sep-11	Nov-11	Feb-12	Sep-12	
E Sussex, South Downs & BH	SE	& Waste	Feb-08	Oct-11	Dec-11	Jun-12	Sep-12	Jan-13	
Hants, Soton & Ports	SE							Jul-07	Adopted
Hampshire, Soton & Ports Review	SE		Feb-11	Jul-11	Nov-11	Apr-12	Jun-12	Jan-13	
IOW	SE			Nov-10	Mar-11	Jun-11	Oct-11	Mar-12	Adopted
Kent	SE	all mins DPDs	Oct-10	Aug-11	Jan-13	Mar-13	May-13	Nov-13	
Medway	SE		Sep-09	Nov-10	Oct-11	Feb-12	Jul-12	Oct-12	
Milton Keynes	SE			Sep-07	Feb-10	Mar-11	Jul-12	Dec-12	
Oxfordshire CC	SE	& Waste		Oct-11	May-12	Sep-12	Nov-12	Sep-13	
Reading	SE							Jan-08	Adopted
Slough	SE							Dec-08	Adopted
Surrey CC	SE	& Primary Aggs						Jul-11	Adopted
W Sussex CC	SE		Nov-13	Apr-14	Sep-14	Dec-14	May-15	Oct-15	
West Berkshire	SE						Jun-11	Jul-12	Adopted
Windsor & Maidenhead	SE	Borough Local Plan	Feb-12						no programme
Wokingham	SE							Jan-10	Adopted

**TABLE 32:  
SOUTH EAST**

**OTHER DPDs**

**AUG 2012**

MPA	Region	DPD Title	I&O	Pref O	Prop Sub	Submission	EiP	Adoption	Status
Bracknell Forest	SE	Minerals & Waste?							No Information
Buckinghamshire CC	SE	Minerals DPD		May-13					
E Sussex CC, South Downs & BH	SE	Mineral Sites	Feb-08						No information
Hants CC, Portsmouth, & Soton	SE	<b>NO OTHER DPDs</b>							
Isle of Wight	SE	Delivery & Manage't			Sep-13	Feb-14	Jul-14	Nov-14	
Kent CC	SE	Min Sites	May-10	May-12	Jun-13				

Medway	SE	Land Allocs & DM				May-14	Sep-14	Jan-15	
Milton Keynes	SE	Minerals DPD		Jul-10	Mar-11	Aug-11	Nov-11	Jun-12	paper in prep
Oxfordshire CC	SE	Site Props & Policies	Apr-07						No Information
Reading	SE	Minerals & Waste?							No Information
Slough	SE	Minerals & Waste?							No Information
Surrey CC	SE	Aggs Recycling			Aug-11	Dec-11	Mar-12	Jul-12	changes to Sept
W Sussex CC	SE	<b>NO OTHER DPDs</b>							
West Berkshire	SE	Minerals & Waste?							No Information
Windsor & Maidenhead	SE	Minerals & Waste?							No Information
Wokingham	SE	Minerals & Waste?							No Information

**TABLE 33:  
SOUTH WEST**

**CORE STRATEGIES**

**AUG 2012**

MPA	Region	Other Inclusions?	I&O	Pref O	Prop Sub	Submission	EiP	Adoption	Status
BANES	SW		Jan-10		Dec-10	May-11	Jul-13	Dec-13	
Bristol	SW							Jun-11	Adopted
Cornwall CC	SW		Apr-11	Jan-12	Jul-12	Dec-12	Apr-13	Sep-13	
Dartmoor NPA	SW							Apr-08	Adopted
Devon CC	SW	Minerals Plan	Mar-11		Jun-13	Aug-13	Mar-14	Sep-14	
Dorset CC	SW		Nov-07	Jul-11	Jul-12	Oct-12	Feb-13	Nov-13	
Exmoor NPA	SW	& Dev Man Policies	Nov-11	Jan-13					
Gloucestershire CC	SW		Sep-06	Jan-08	Mar-15	Jun-15	Sep-15	Mar-16	
N Somerset	SW		Sep-07	Nov-09	Mar-11	Jul-11	Nov-11	Apr-12	Adopted
Plymouth	SW							Apr-07	Adopted
Plymouth (Review)	SW	Plymouth Plan		Aug-12	Aug-13	Dec-13	Mar-14	Dec-14	
S Gloucester	SW		May-08	Jan-09	Aug-10	Mar-11	Jun-12	Apr-13	
Somerset CC	SW	& Site Allocs	Dec-11	Nov-12	Jul-13				
Torbay	SW		Sep-09						Under Review
Wiltshire CC	SW							Jul-09	Adopted

**TABLE 34:  
SOUTH WEST**

**OTHER DPDs**

**AUG 2012**

MPA	Region	DPD Title	I&O	Pref O	Prop Sub	Submission	EiP	Adoption	Status
BANES	SW	Placemaking Plan	Sep-12		Nov-12	Feb-13	Jun-13	Dec-13	
Bristol	SW	Site Allocs & Dev Man	Oct-10	Mar-12	Nov-12				
Cornwall CC	SW	Minerals DPD	Nov-06	Apr-13	Jul-13	Oct-13	Dec-13	Apr-14	
Dartmoor NPA	SW	Development Man & Delivery			Mar-12	May-12	Dec-12	Mar-13	
Dartmoor NPA	SW	M&W DPD							no programme
Devon CC	SW	DC Policies & Site Allocs	Aug-08						Under Review
Dorset CC	SW	Site Allocs	Oct-08	Feb-13					
Gloucestershire CC	SW	<b>NO OTHER DPDs</b>							
N Somerset	SW	Sites & Policies	Sep-12		Oct-12	Jan-13		May-13	
N Somerset	SW	Dev Man DPD							work started
Plymouth	SW	Minerals						Aug-07	Adopted
Somerset CC	SW	<b>NO OTHER DPDs</b>							
South Gloucestershire	SW	Policies, Sites and Places							No information
Torbay	SW	Site Specific Policies & Props							No information
Wiltshire CC	SW	Control Policies						Jul-09	Adopted
Wiltshire CC	SW	Site Allocs	Sep-10		Jan-12	Jul-12	Oct-12	Nov-12	

**TABLE 35:  
WEST MIDLANDS**

**CORE STRATEGIES**

**AUG 2012**

MPA	Region	Other Inclusions?	I&O	Pref O	Prop Sub	Submission	EiP	Adoption	Status
Birmingham	WM		Dec-10	Mar-11	Oct-12	Mar-13	Jul-13	Dec-13	
Black Country JSU	WM							Feb-11	Adopted
Herefordshire CC	WM		Jul-08	Feb-10	Aug-12	Oct-12	Dec-12	Mar-13	
Shropshire CC	WM							Feb-11	Adopted
Staffordshire CC	WM		Sep-08	Mar-13					No Information
Stoke on Trent	WM							Oct-09	Adopted
Telford & Wrekin	WM							Dec-07	Adopted
Telford & Wrekin	WM	Shaping Places	May-11	Aug-11	Apr-12	Jul-12	Dec-12	Jan-14	Unofficial
Warwickshire CC	WM		Feb-09	Mar-13					No Information
Worcestershire CC	WM		Oct-12	Apr-13	Oct-13	Jul-14			programmed start

**TABLE 36:  
WEST MIDLANDS**

**OTHER DPDs**

**AUG 2012**

MPA	Region	DPD Title	I&O	Pref O	Prop Sub	Submission	EiP	Adoption	Status
Birmingham	WM	NO OTHER DPDs							
Black Country JSU	WM	NO OTHER DPDs							
Herefordshire CC	WM	Minerals & Waste	Jul-11	Jan-13		Dec-13	Jan-14	Jan-15	no programme
Shropshire C	WM	Site Allocs & DM	Apr-10	Mar-12					no programme
Staffordshire CC	WM	NO OTHER DPDs							
Stoke on Trent	WM	Development Portfolio		Aug-06					no programme
Telford & Wrekin	WM	Waste & Mins DPD	Nov-11	Jan-12	Sep-12	Dec-12	Apr-13	Sep-13	to follow CS review
Warwickshire CC	WM	Site Specific Allocs	May include in Core Strategy						no programme
Worcestershire CC	WM	Hard Rock							

**TABLE 37:  
YORKS & HUMBER**

**CORE STRATEGIES**

**AUG 2012**

MPA	Region	Other Inclusions?	I&O	Pref O	Prop Sub	Submission	EiP	Adoption	Status
Barnsley	YH							Sep-11	Adopted
Bradford	YH		Jan-08	Oct-11	Nov-12	Mar-13	Sep-13	Dec-13	
Calderdale	YH		Nov-08	Jul-12	Dec-12	Mar-13	Nov-13	Jan-14	
Doncaster	YH		Aug-07	Sep-10	Mar-11	Jul-11	Dec-11	Jun-12	Adopted
E Riding & Hull	YH			Oct-11	Jun-12	Sep-12	Jan-13	Jun-13	
Kirklees	YH			Apr-09	Sep-12	Mar-13	Apr-13	Sep-14	
Leeds	YH			Oct-09	Feb-12	May-12	Jul-12	Jan-13	
N Lincs	YH							Jun-11	Adopted
NE Lincs	YH	& Dev Con Policies		Dec-08					Start again in 2013
North Yorks Moors NPA	YH							Nov-08	Adopted
North Yorkshire CC	YH		Mar-12	Jul-12	Dec-12	Apr-13	Jul-13	Dec-13	
Rotherham	YH		Feb-06	Jul-11	Jun-12	Sep-12	Oct-12	Feb-13	
Wakefield	YH	& Dev Con Policies						Apr-09	Adopted
York City	YH		Sep-07	Aug-09	Sep-11	Feb-12			Abandoned at EiP
Yorks Dales NPA	YH		Jan-13		Jun-13	Dec-13	Mar-14	Sep-14	No Information

**TABLE 38:  
YORKS & HUMBER**

**OTHER DPDs**

**AUG 2012**

MPA	Region	DPD Title	I&O	Pref O	Prop Sub	Submission	EiP	Adoption	Status
Barnsley	YH	Devel Sites and Places		Jul-12	May-13			Nov-14	
Bradford	YH	Land Allocs	Jan-13						
Calderdale	YH	Land Allocs and Desig's	Jul-12	Jun-13	Mar-14	Jun-14	Oct-14	Nov-15	
Doncaster	YH	Sites & Policies	Dec-07	Jul-12					new LDS
E Riding & Hull	YH	Joint Minerals DPD			Jul-12	Oct-12	Mar-13	Sep-13	
Kirklees	YH	Devel & Open Space			Jun-14	Dec-14	Aug-15	Feb-16	
Leeds	YH	Natural Res & Waste			Dec-10	Jul-11	Nov-11	Jan-12	changes to July
N Lincs	YH	Minerals & Waste	Jul-11	Jul-12	Dec-12	Apr-13	Aug-13	Mar-14	
NE Lincs	YH	NO OTHER DPDs							
North Yorks Moors NPA	YH	NO OTHER DPDs							
North Yorkshire CC	YH	M & W Site Allocs	Jan-14			Dec-16			No Information
Rotherham	YH	Sites & Polcies	Jul-11	Jul-12	Mar-13	Jul-13	Nov-13	Mar-14	
Wakefield	YH	Development Policies						Apr-09	Adopted
Wakefield	YH	Site Specific Proposals			Feb-11	Aug-11	Nov-11	Jun-12	
York City	YH	Allocations DPD	Mar-08		Apr-11	Jun-11	Sep-11	Nov-11	
Yorks Dales NPA	YH	NO OTHER DPDs							

**TABLE 39:  
NORTH WALES**

**AUG 2012**

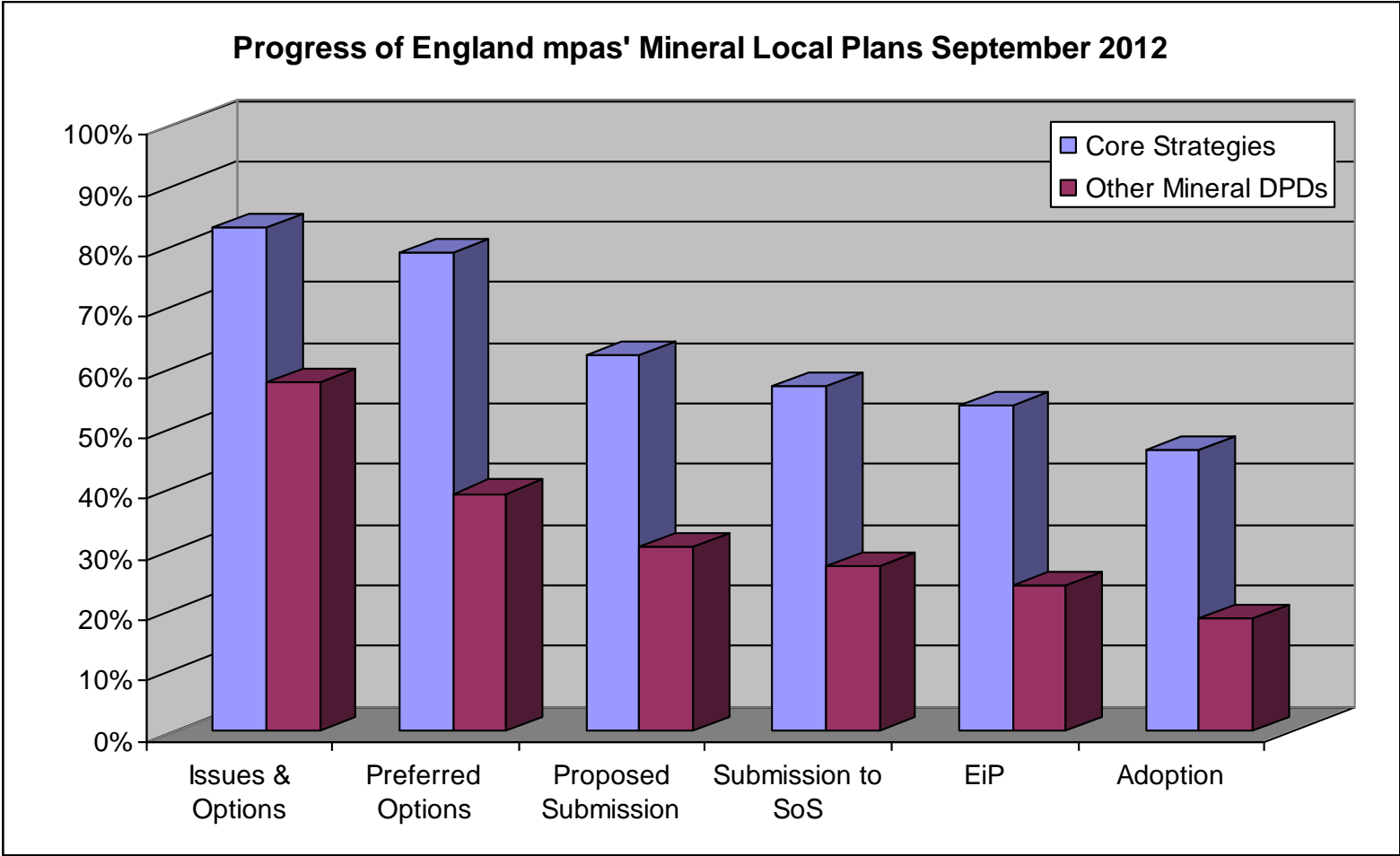
MPA	Region	Title	Strat Opt	Pre-Dep	Dep Plan	Submission	EiP	Adoption	Status
Conwy	N	LDP 07-22	Oct-06	Jun-09	Mar-11	Aug-12	Jan-13	Aug-13	
Denbighshire	N	LDP		Jun-08	Oct-09	Oct-10	Jan-12	Sep-12	
Flintshire	N	LDP						Dec-15	No information
Gwynedd	N	LDP		Sep-12	Oct-13	Nov-14	Apr-15	Apr-16	
Isle of Anglesey	N	LDP 06-21							Jointly with Gwynedd
Snowdonia NP	N	LDP						Jul-11	LDP Adopted
Wrexham	N	LDP 06-21		Oct-07	Jun-10	Sep-11	Jan-12	Sep-12	

TABLE 40:  
SOUTH WALES

AUG 2012

MPA	Region	Title	Strat Opt	Pre-Dep	Dep Plan	Submission	EiP	Adoption	Status
Blaenau Gwent	S	LDP	Jun-07	Nov-08	May-11	Feb-12	Jun-12	Feb-13	
Brecon Beacons NP	S	LDP		Jan-09	Nov-10	Oct-11	Oct-12	Oct-12	
Bridgend	S	LDP 06-21	Jan-07	Feb-09	Jul-11	Jul-12	Nov-12	Feb-13	
Caerphilly	S	LDP 06-21						Nov-10	LDP Adopted
Cardiff	S	LDP 06-21	May-11	Dec-12	Nov-13	Aug-14	Mar-15	Oct-15	
Carmarthenshire	S	LDP 06-21	Jun-08	Nov-09	Jun-11	May-12	Jun-12	Jul-13	
Ceredigion	S	LDP 07-22	Jan-07	Mar-09	Dec-10	Dec-11	Apr-12	Nov-12	
Merthyr Tydfil	S	LDP 06-21						May-11	LDP Adopted
Monmouthshire	S	LDP 11-21	Jul-08	Jul-09	Nov-11	Sep-12	Jan-13	Apr-13	
Neath/Port Talbot	S	LDP	Jul-09	Sep-11	Jan-13	Nov-13	Mar-14	Nov-14	
Newport	S	LDP 11-26	Mar-09	Jan-10	Apr-12	Jul-12	Nov-12	Oct-13	Alt sites to 12 Sept
Pembrokeshire CC	S	LDP 11-21		Mar-09	Jan-11	Mar-12	Sep-12	Jan-13	
Pembrokeshire Coast NP	S	LDP 06-21						Sep-10	LDP Adopted
Powys	S	LDP		Mar-12	Apr-13	Dec-13	Apr-14	Dec-14	
Rhondda Cynon Taff	S	LDP 06-21						Mar-11	LDP Adopted
Swansea	S	LDP	Aug-12	Apr-13	Oct-13	Nov-13	Jun-14	Dec-14	
Torfaen	S	LDP 06-21	Aug-07	Jan-08	May-11	May-12	Jul-12	Jan-13	Withdrawn
Vale of Glamorgan	S	LDP 11-26		Jan-08	Feb-12	Sep-12	Jan-13	Jan-14	

CHART 6: MINERALS LOCAL PLAN PROGRESS (ENGLAND)





**TABLE 41: MINERALS LOCAL PLAN PROGRESS (ENGLAND)**

Data	Total	Issues & Options	Preferred Options	Proposed Submission	Submission to SoS	EiP	Adoption
<b>Core Strategies</b>	<b>95</b>	<b>79</b>	<b>75</b>	<b>59</b>	<b>54</b>	<b>51</b>	<b>44</b>
<b>Other Mineral DPDs</b>	<b>92</b>	<b>53</b>	<b>36</b>	<b>28</b>	<b>25</b>	<b>22</b>	<b>17</b>

Percentages	Total	Issues & Options	Preferred Options	Proposed Submission	Submission to SoS	EiP	Adoption
<b>Core Strategies</b>	<b>100%</b>	<b>83%</b>	<b>79%</b>	<b>62%</b>	<b>57%</b>	<b>54%</b>	<b>46%</b>
<b>Other Mineral DPDs</b>	<b>100%</b>	<b>58%</b>	<b>39%</b>	<b>30%</b>	<b>27%</b>	<b>24%</b>	<b>18%</b>

## **SECTION SEVEN - SUMMARY/KEY POINTS**

- Average replenishment rates of aggregate reserves (i.e. the rates at which production is being replaced with new permissions) are continuing to decline. Less than 50% of sand and gravel reserves have been replenished in the last 10 years to 2010 and only around 67% of hard rock reserves
- There has been a 40% drop in the total tonnage of landbanks in England and Wales since 1997
- 25% of sand and gravel landbanks in England are below the minimum of 7 years and 50% are below 10 years
- The 15 year average approval rate for hard rock applications is 91% and for sand and gravel applications is 83%
- The success rate of sand and gravel appeals is 80% over a 15 year period
- There has been no appreciable improvement in the time it takes to obtain planning permission since 1996
- Sand and gravel approvals took an average of 28 months in 2010 and hard rock approvals 36 months
- The statistics indicate that pre-application discussions do nothing to shorten this process. The majority of applications still take in excess of 12 months
- In 2010, only 9 planning applications for new extraction were submitted by members, compared with 40 in 1996
- At the end of August 2012, only 44 out of 95 mineral planning authorities in England had an adopted Core Strategy, when the original target for completion of these documents was the end of 2007. In Wales, only 5 out of 25 authorities had an adopted local development plan